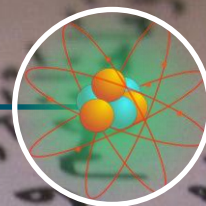


PAK ISLAMIC SCIENCE EDUCATION SYSTEM



PROSPECTUS - 2024



COPYRIGHTS© | PISES | 2024

بِسْمِ اللَّهِ الرَّحْمَنِ الرَّحِيمِ

CONTENTS

INTRODUCTION	3
LOCATION.....	3
Message from ceo/ founder.....	4
Characteristics of an educated child	5
Bloom's taxonomy.....	5
We commit.....	7
admissions.....	8
Curricula.....	9
Assessment & examination.....	10
Team	11
yearly and daily calendar	12
Timings	12
Uniform	13
facilities at pises.....	13
School management system (SMS)	14
Discipline.....	15
Nursery and montessori.....	15
transport.....	15
cafeteria.....	16
Parent information workshop.....	16
homework.....	16
Assembly.....	16
Study/ excursion trips.....	16
first aid.....	17
students with manageable disabilities.....	17
Rules and regulations.....	18
Important contact numbers	20

INTRODUCTION

PISES a symbol of educational excellence founded in 2024 with a commitment to shaping the future through innovative learning experiences encompassing both general and religious educations. As we proceed on this educational journey, we are dedicated to fostering a nurturing environment that empowers students to thrive academically, socially, and personally. Our vision is to cultivate a community where curiosity is ignited, critical thinking is honed, and creativity is celebrated. With a team of passionate educators PISES is poised to become a hub of knowledge, inspiration, and growth, providing students with the tools they need to excel in a dynamic and ever-evolving world with clear understanding of religion.

PISES intends to spread its wings across Pakistan developing a productive chain of schools under its unique motto of imparting education for a holistic personality growth. The school operates under a distinct board listed in the section I. I, By intertwining education with a welfare cause, we aim to produce a generation which is not only well-prepared for their careers but are also committed to make a positive impact on their country and humanity.

The school is initially housed in Khalabat Township Haripur KPK and envisage to have its branches all across the country. The school intends to offer admissions from Montessori to FA/ FSc , initially offering from Montessori to 7th.

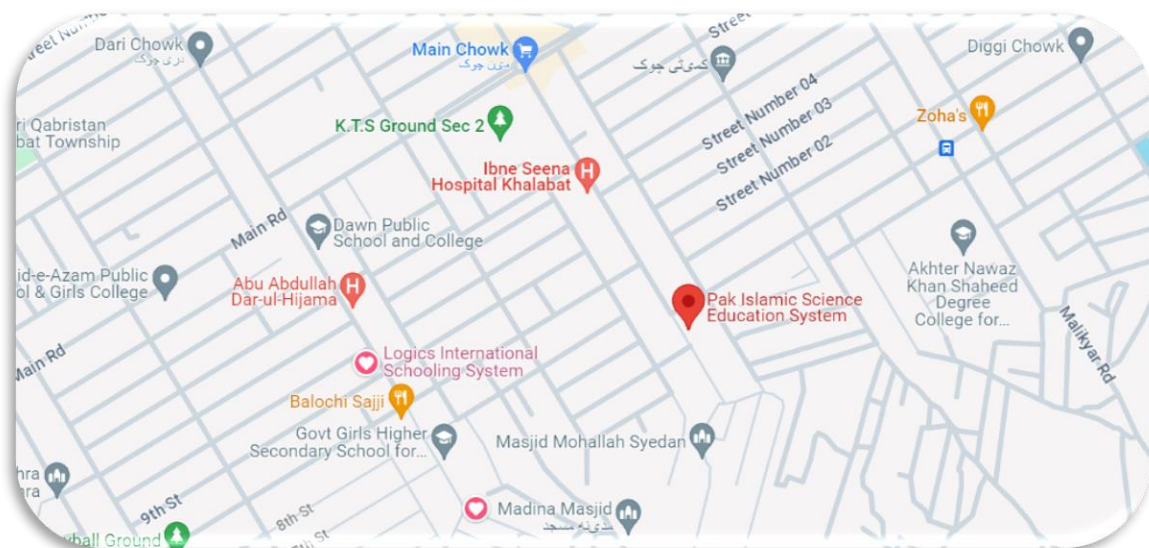
PISES values to produce honest, creative, patriot, confident, socially aware, committed, competent, ambitious and healthy youth who can drive this nation to the excellence and can have their contribution to the broader cause of humanity.

Admissions to PISES are purely merit based and are free from all biases and prejudice of any kind.

LOCATION

Address: Sayyadan Chowk, Sector No.I, Khalabat Township Haripur, KPK. Tel No. 0995-622877, +92-316-5731089

Web. <https://www.pisespk.com>, Email. ceo.pises@gmail.com



PISES recommends you to visit the website to have some basic understandings of the model that is followed for schooling. This prospectus is a detailed elaboration of the curricula, bloom's model, assessment methods, our values, and our system of education. Please do not hesitate to visit PISES for details on any of the above topics. Your suggestions about the system are also welcome through any means listed above.

MESSAGE FROM CEO/ FOUNDER

Dear Parents and Learners

Pak Islamic Science Education System (PISES) is founded to transform the existing education system of our beloved homeland to a system based upon the true definition and purpose of education. We did theoretical, practical and voyager's research to reach meticulous purpose of educating our kids. The purpose of primary education is to compose a personality having knowledge understandable and implementable in the idiom of the time, having a personality with strong self and higher ethical values, having confidence and responsibility and having reliable psychometric skills. These Kids from their alma mater will becoming ready to steer Pakistan forward in the global academic, research and economic voyage.



With this definition in mind, PISES started a schooling system targeting to become a chain school starting from Haripur and will have presence in multiple cities of Pakistan. To materialize the concepts, PISES developed an education framework encompassing with different weightages of four aspects of an individual's education. The cognitive domain of education is integrated by developing state of the art curricula in science and religious education. Both English and Arabic are made compulsory for understanding new theories in the idiom of the time. The psychometric domain is covered by incorporating computer education as compulsory components in the curricula of few classes and by adding activity model to the assessment of our kids. Sports is an integrated component of the framework and the involvement of individuals in sports and sports-like activities will pertinently be profiled. The affective domain of an individual will be taken care of by invited talks of high-profile university professors and prominent personalities of the society with certain frequency. The framework will give conclusive and observable results expected to become part of the learners' personality.

In future, we intend to launch special pre-schooling for other Ly enabled kids who won't find themselves able to align with conventional education. These kids will be prepared to get in line with the conventional education. Technology will remain as core support asset for education and will manifest in teaching aids, assignment, student management portals, website, multimedia and what not.

Our schooling network will rapidly expand to different cities and we intend to build purpose-based campuses across the country.

I label PISES as "Holistic Global Personality Builder" and welcome you all.

CEO/ Founder PISES

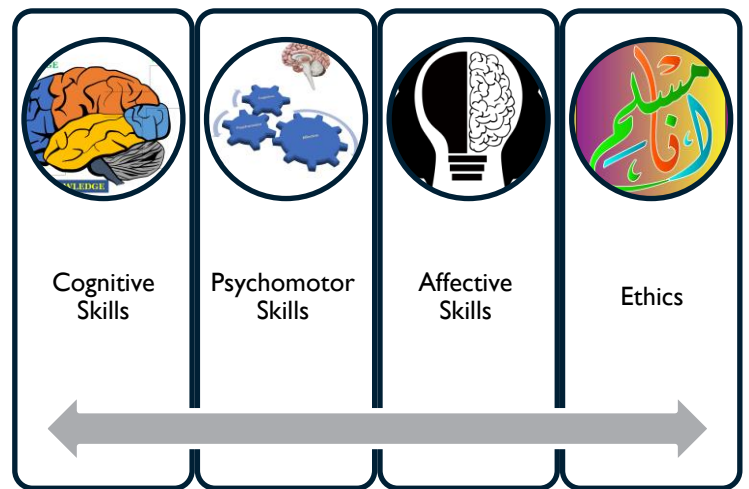
CHARACTERISTICS OF AN EDUCATED CHILD

Cognitive skills are the skills needed to think, learn, reason, remember, read, write and pay attention. In PISES these skills are Achieved through Appropriate: Literature, Teaching methodology, Teaching aids, Assignments, Quizzes, Digital and non-digital libraries, Scaled competitions and special seminars.

Affective skills are the skills related to the behavior and attitude that students need to learn. In PISES these skills are achieved through teaching Arabic language for getting literal access to a wide variety of literature, Community interactions, Community services, Discipline, study of leadership skills and trainings.

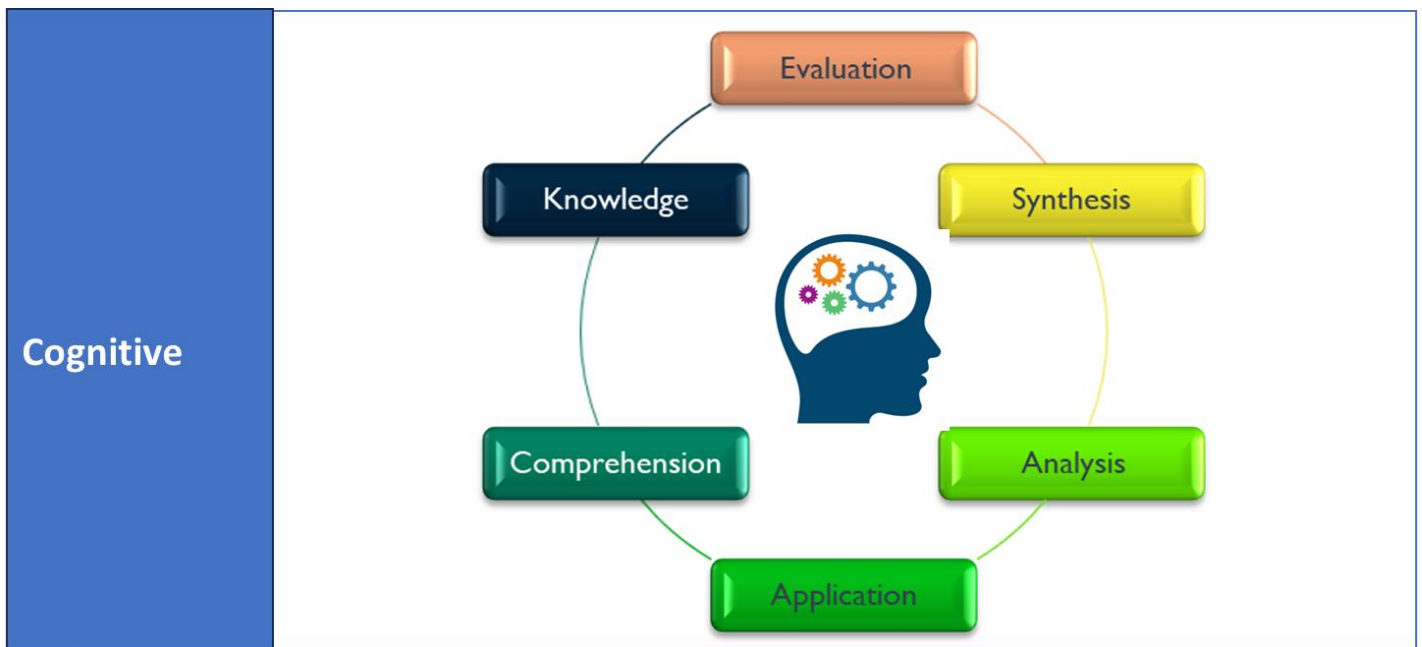
Psychomotor skills are the skills demonstrated by physical activities such as movement, coordination, manipulation, dexterity, grace, strength and speed. In PISES these skills are achieved through computer-based learning, sports, co-curricular activities and a unique activity model on the basis of seniority of the student.

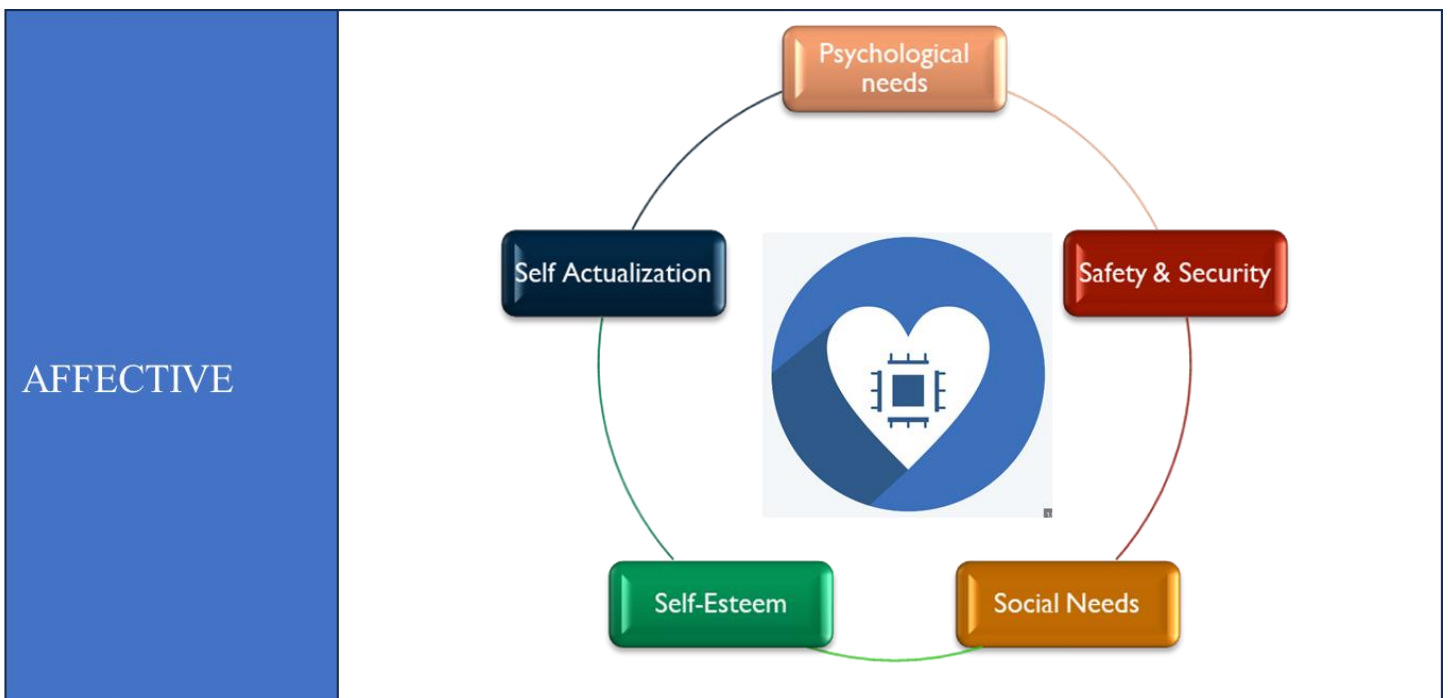
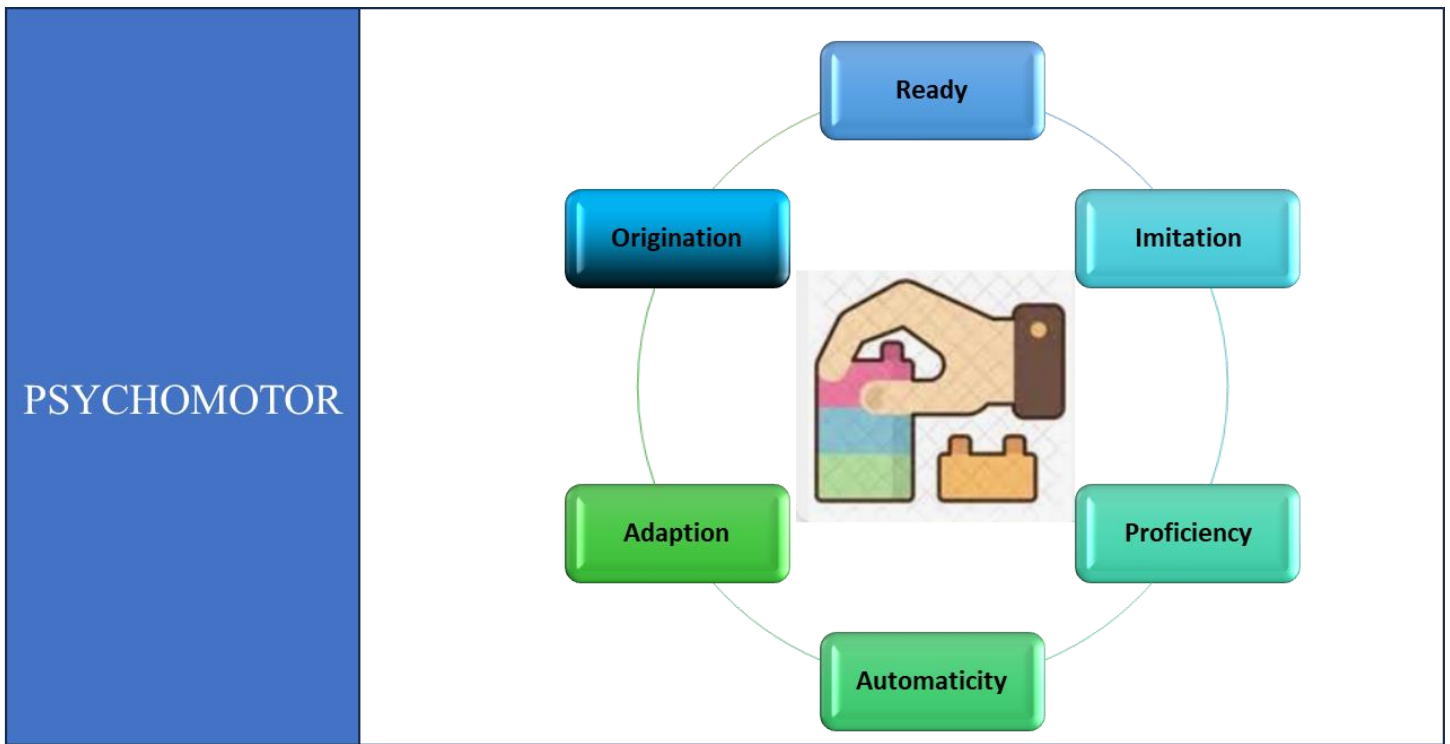
Ethics are the norms and principles related to personal and professional life. High ethical values are achieved through making ethics the part of curricula, guided seminars, Group Discussions and teaching ethics to the citizens through students.



BLOOM'S TAXONOMY

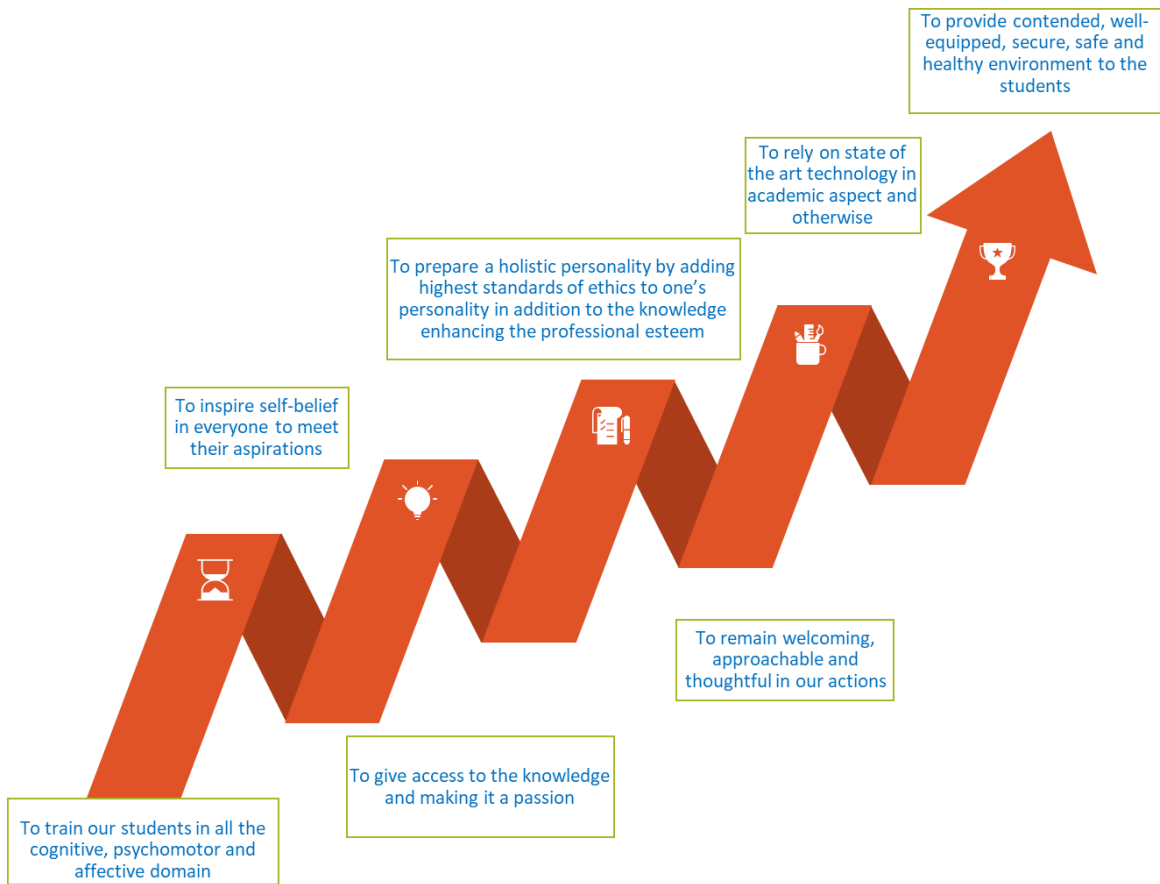
Different levels of Bloom's taxonomy are mapped that are achieved through the means given above. A comprehensive understanding of all these standards is essential for the parents who actually want their kids to get education.





According to Bloom's taxonomy, learning of a student is episodic, for which he/ she needs to transit through multiple phases of each of the cognitive, psychomotor and affective domain. For example, self-actualization can't be achieved without self-esteem and a clear understanding of social needs. PISES opted different tools and techniques to incorporate these understandings in the students right from kindergarten. After going through these phases, the students shall be able to synchronize skills with the requirements of higher degrees in any of the discipline including science, engineering and medicine.

WE COMMIT



WE VALUE



ADMISSIONS

PISES takes annual intake and starts admitting new entrants from December of Each year. The deadline for applying new admission is 5th April, however admissions to Montessori and nursery remains open throughout the year. Admission in PISES is strictly merit based and the merit of a student is assessed on the following basis:

1. Admission Written Test: 40%
2. Previous academic record: 30%
3. Interview: 30%

The minimum age required for each class is given in the table below:

No	Class	Min Age (Years)	When to apply
1.	Montessori	3	Throughout the year
2.	Nursery	4	Throughout the year
3.	KG	5	From Dec to Apr
4.	One	6	From Dec to Apr
5.	Two	7	From Dec to Apr
6.	Three	8	From Dec to Apr
7.	Four	9	From Dec to Apr
8.	Five	10	From Dec to Apr
9.	Six	11	From Dec to Apr
10.	Seven	12	From Dec to Apr

PISES 7th class will start in April 2024 and subsequent classes be added through incremental approach. Admission to PISES can be applied by two means:

1. Apply Online: All the applicants can apply online for admission on the form given on <https://www.pisespk.com>, after which they will visit the school to collect fee challan for depositing fee to the nearest bank branch.
2. Apply on site: The applicants can also visit the school office to collect printed admission form, fill it and submit back to get fee challan that will then be deposited to the nearest bank branch.

All the applicants are advised to submit the following documents along with admission form (in case of on-site) and fee challan (in case of online).

- Previous school leaving certificate (if applicable)
- Father's/ Ward's CNIC copy
- Birth Certificate (For new entrants)/ Form B.

CURRICULA

All the books approved by DCTE KPK are prescribed in the school's curricula in all the courses. Following courses are prescribed for almost all the classes starting from Class I to Class 7.

Arabic: Starting from basic Arabic to Arabic essential to understand umm ulu loom, The Quran

Cognitive Level

Islamiyat: Basic Knowledge of Islam essential to lead a faithful life

Cognitive Level

Tajweed ul Quran: Starting from Basic Knowledge of Makharij to advanced rules of recitation

Cognitive and Psychomotor Level

Quran e Hakeem: Understanding Quran

Highest Cognitive & Affective level

Science: General Science principles with all practical aspects at psychomotor level

Cognitive & Psychomotor level

Mathematics: Understandings of algebra, arithmetic, geometry and general mathematics

Cognitive, Psychomotor, Affective Level

Computer Science: Basic skills at earlier stages and programming at advanced levels

Cognitive and Psychomotor Level

English: Language, grammar and speaking skills

Cognitive & Affective level

Urdu: Language, grammar and speaking skills

Cognitive & Affective level

Social/ Pakistan Studies: Basic to advanced knowledge of social study, history and geography

Cognitive level

All the students will be imparted with the training in scheduled slots, the training related to different social, welfare, economics, ethical and what not. These activities is the part of curricula and termed as Activity model.

The blend of Computer in each subject of the curricula ensures that the student is getting up-to-date knowledge on the subject. The student will be provided with the schemas on online accessible portals for doing research in different domains which he/she has been studying in class.

Sports and co-curricular activities are also made part of the curricula. Yearly grand tournaments are held for making students learn the importance of sports in life.

All the students should buy as many books as they can, for being bookish and, dedicate a cupboard at their homes to place these books.

ASSESSMENT & EXAMINATION

The assessment of the students at PISES has multiple perspectives. All the three i.e. cognitive, psychomotor and affective domain of the students are assessed. All those classes where the students are assessed by the centralized education board in their final exams are assessed for their qualification for appearing in these exams through the same means that are used for non-board students. The detailed assessment table is given below.

	Cognitive Assessment (50 – 70%)	Psychomotor Assessment (15 - 25%)	Affective Assessment (15 - 25%)
Assessment done through	Final written exams: 40 Mega Assignment: 5 Presentation: 5	Lab exam: 10 Computer test: 5 Toy test: 5 Activity test: 5	Presentation: 10 Community work: 5 Discipline: 5 Interview: 5
Results format	Grade card	Grade card Subjective report	Grade card Subjective report

TEAM



Designation	Education	Contact No	Email
CEO PISES	PhD (Computer Science) M.Phil (SE) OCP, JCP MA Islamiyat	0995-622877	Ceo.pises@gmail.com
Principal PISES	MS (Computer Science) MSc, BSc	0995-622877	Principal.pisespk@gmail.com
Science Teacher I	MSc Chemistry	0995-622877	abc@abc.com
Science Teacher II	BSc Maths, Phy	0995-622877	abc@abc.com
Urdu/ English Teacher	MA English	0995-622877	abc@abc.com
Arabic Teacher	MA Islamiyat	0995-622877	abc@abc.com
Montessori Teacher	BA, Dip in Mont Edu	0995-622877	abc@abc.com
Administrator	FA	0995-622877	info@pisespk.com

YEARLY AND DAILY CALENDAR

The activity calendar always has a pertinent importance in any educational institution. After the closure of admissions in PISES on 5th of April, the session will start on 10th April every year. The school timings and activity calendar is approximate and tentative and is subject to change based on Sundays and other public holidays. The timings will maximally be determined after consulting the concerned parents. The activities listed in the table are all equally important under the vision and mission of PISES. Details of school timings and activities is given in the table below.

Yearly		Daily	
Activity	Date	Activity	Date
Start of Session	10 th April	First bell	0800
Public Holidays	As announced by the Govt. of Pakistan	Assembly	0800-0820
Weekly Holiday	Sunday	Session I	0820-0900
Summer Vacations	15 th June – 31 st August (Tentative) or as announced	Session II	0900-0940
Winter Vacations	23 rd Dec – 31 st Dec (Tentative) or as announced	Break	0940-1000
First Sessional Examination	September	Session III	1000-1040
Second Sessional Examination	December	Session IV	1040-1120
Final Examination	March	Break	1120-1130
Result Declaration	31 st March	Session V	1130-1205
Activity	Once a week	Session VI	1205-1240
Special Lecture	Once Fortnightly	Session VII	1240-1320
Sports Week	September	Zuhr Prayer	1320-1340
Community Service Week	November	*All the sessions on Friday will be of 30 minutes. The timings of nursery and Montessori will be different	
One Match (Sports)	Once a month		

The timings of PISES are set according to the climate change and the seniority of the students to avoid rush hours because indiscipline is observed in the students in rush hours.

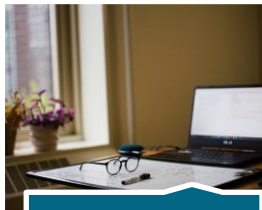
TIMINGS

Class	Session	Timings
1 to 6	April – Oct	0830 to 1420 hrs
1 to 6	Nov-Mar	0800 to 1340 hrs
7 to 10	April – Oct	0800 to 1420 hrs
7 to 10	Nov-Mar	0800 to 1400 hrs

UNIFORM

Session	Male		Female	
	Nur to 4	5 to 10	Nur to 4	5 to 10
April – Oct	Grey trouser, white shirt (Blue mix), green cap, black formal shoes, black or grey socks, school badge	Grey trouser, white shirt (Blue mix) OR White shalwar kameez with navy blue waist coat, green cap, black formal shoes, black or grey socks, school badge	White shalwar and White Shirt with blue frock, navy blue scarf OR white patti, black formal shoes, black or grey socks, school badge	White shalwar and White Shirt blue frock, White scarf & white dupatta, black formal shoes, black or grey socks, school badge
Nov - Mar	Grey trouser, white shirt (Blue mix), green cap, Green coat/ gersey, black formal shoes, black or grey socks, school badge	Grey trouser, white shirt, green cap, Green coat/ gersey, black formal shoes, black or grey socks, flag of Pakistan, school badge	White shalwar and White Shirt with blue frock, Green coat/ gersey, White scarf/ patti, black formal shoes, black or grey socks, school badge	White shalwar and White Shirt with blue frock, White scarf & white dupatta, Green coat/ gersey, black formal shoes, black or grey socks, school badge

FACILITIES AT PISES



IT Ecosystem



Montessori room



Activity Room



Science Lab



Canteen



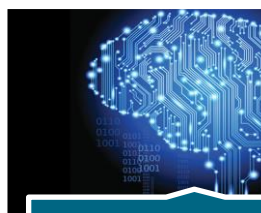
Prayer Facility



Seminar Hall



Play Area

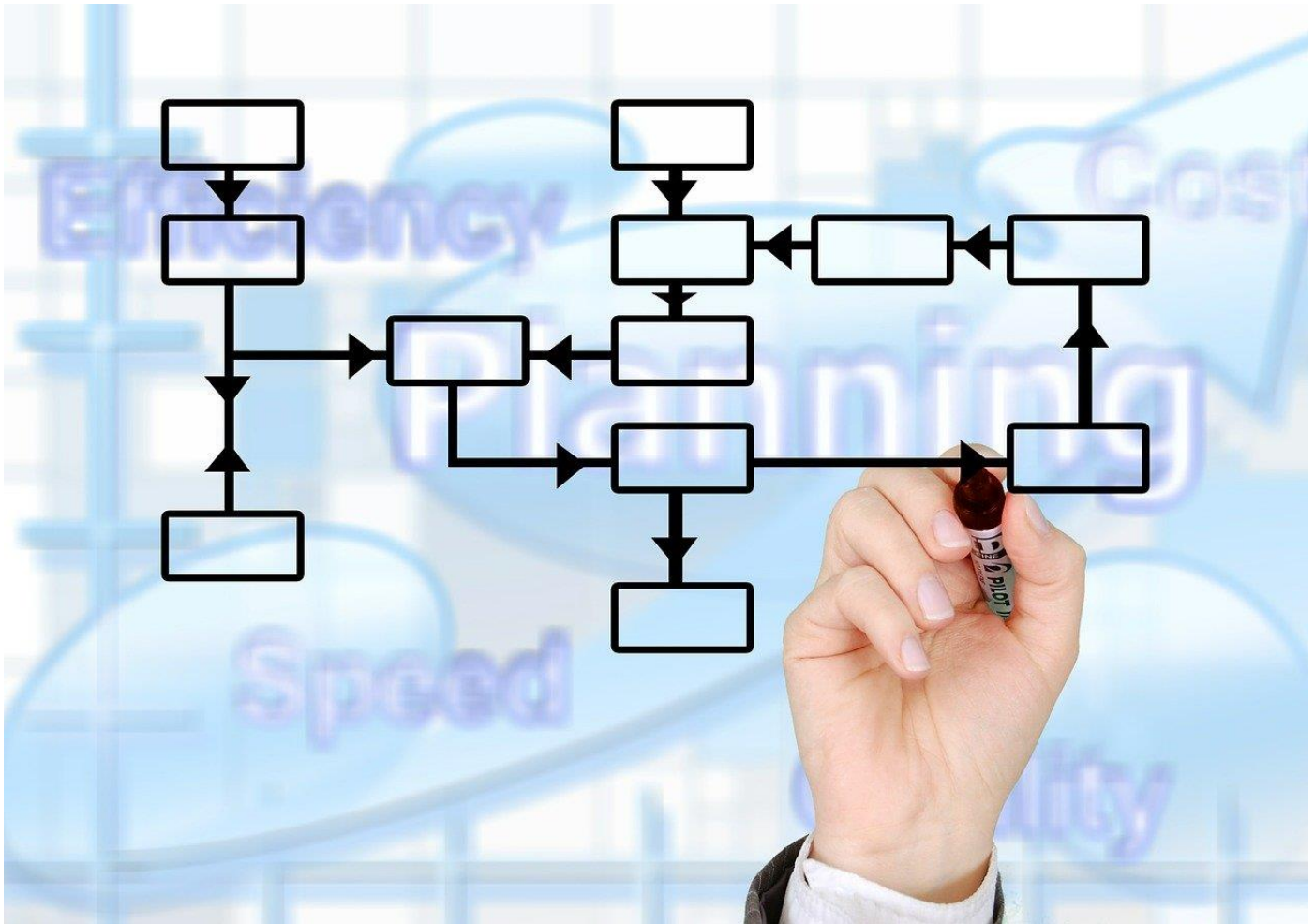


ICT & Internet



Library

SCHOOL MANAGEMENT SYSTEM (SMS)



Automated systems are designed and optimized in a way to ease and make foolproof the execution of related operations and strategies. PISES developed an automated school management system (SMS) available on web to update different activities and operations related to the academic proceedings of your kid. SMS will provide the following functionalities to the students. The parents can also monitor the activities through web interface for which they will be given with a username and password at the time of admission.

The main functionalities of PISES SMS are listed below:

1. Cognitive/ psychomotor/ affective performance of the student
2. Fee submission status
3. Class timetable
4. Examinations and results
5. Important notifications (The concept of Notice Board)
6. Updates about the student's academic health
7. Co-curricular activities of the student
8. Complaint portal
9. Suggestion portal
10. Updates on curricula/ books and syllabus
11. Contact lists and methods of the concerned staff

DISCIPLINE

ATTENDANCE



PISES has a clear policy on the attendance of the students. All the students should be regular in attending the sessions specifically in this school because a holistic and complete plan of action will be executed to orient the personality of a kid according to the pre-determined objectives. One miss can cause much loss. The parents are encouraged to monitor the attendance of his/ her ward through the online portal SMS on frequent basis.

There is a mechanism to deal with frequent absence from the class. The reminder about frequent absence will first be generated through email/ letter. An unsatisfactory outcome of which will be dealt in a meeting with the parents. Failure of all remedial measures will cause expulsion of the student from the roll of the school. In order to appear in the final examination, a student must have at least 75% attendance during the year, failing to achieve that will result in failure grade.

The students are advised to take proper leave from the institution on prescribed online/paper form. No leave be allowed during the examination except emergency leave that will be allowed in case of a blood relation's death or severe ailment.

PUNCTUALITY

PISES advises to strictly adhere with the timings of the school. All the activities within the school time will strictly be time based for which the students should be punctual.

NURSERY AND MONTESSORI



Children are allowed to attend Montessori and nursery at the age of 3 (minimum). Basic learning related to the content, ethics, sports, infotainment and entertainment will be facilitated on the premises. Admissions to playgroups and nursery sessions will remain open throughout the year. For such admissions, the parents will be called in a GREETING session every year to understand the mechanism and working of nursery/ playgroup section.

For further details, the parents may contact Mr. Zaheer Iqbal (Coordinator (Nursery)).

TRANSPORT

All the parents/ guardians are requested to make a few visits to the school to make us confident that your ward is brought and sent back with a known and reliable individual. Although the names of the parents/ guardians authorized to bring or collect the child will be registered, still a close working relationship will increase our confidence. The school also provides rented transport facility on limited seats that will be filled on First come first serve basis. For details about the transportation fleet, please contact Admin section.

CAFETERIA



The school has the facilities of some light food to the students in the break intervals. The students having additional needs can visit the cafeteria on self-service and payment basis. No other unauthorized person will be allowed to supply or deliver any food to any of the student.

PARENT INFORMATION WORKSHOP



attain the required objectives.

The model followed at PISES needs regular interaction and permanent involvement of the parents for building a holistic personality of the kids. All the parents are requested to respond in a professional manner any interaction requested by the school. The reports/ letters received from the school should thoroughly be looked into and a comprehensive plan in the light of that may always be prepared. The parents are also called for workshops conducted by the schools to understand and implement a particular lifestyle that your kid need to follow to

HOMEWORK



The students will be given with the assignments related to his/her cognitive, psychomotor and affective domain that is slightly different from the assignments given in a conventional schooling system. The parents are requested to understand in depth the assignments given and help their wards to solve it. The guardians should regularly see the student diary to check the assignments given to him frequently.

ASSEMBLY



Every student should appear in assemblies that are scheduled from time to time. Daily assembly of the students at the opening of the day will be held. All other assemblies like assembly for prayer, assembly for seminar, assembly for making announcements will be notified from time to time. A few assemblies for community services will also be scheduled that will be notified to the students as well as to the parents.

STUDY/ EXCURSION TRIPS



The students will be sent on study and excursion trips from time to time. The yearly calendar for these activities is provided to the parents that is subject to change according to the situations and context. The parents are requested to cooperate in sending their wards on such trips.

FIRST AID



In case of minute emergencies First Aid is provided to the students within the premises. The need beyond first aid management is to be managed by the parents themselves.

STUDENTS WITH MANAGEABLE DISABILITIES



All the students with small disabilities like stammering, low hearing etc are managed through counsellor. The parents are issued with specific instructions to initially manage and slowly get rid of such disabilities. The need of any external agency to address such issues is also made by the school on need basis.

RULES AND REGULATIONS



1. Each academic session at PISES will start from April. Admissions to new classes will normally remain open from December to April. No admission request will be entertained after 30th September.
2. The students who remained absent for some emergency reason should bring the next day, an explanation note duly signed by the parents.
3. The students will not be allowed to stay on campus before or after the school timings until otherwise notified.
4. All the new entrants will be registered to new batches in a “Registration Open” session to be held in the month of April. Parents/ Guardians should attend this session every year.
5. The parents/ guardians may be called upon to the campus by the concerned coordinator for having discussion on student’s cognitive, psychomotor, affective capabilities and in any other matter deemed necessary. The parents/ guardians are advised to be present in the scheduled call.
6. Teaching in various courses will be conducted through lecturing, discussions, seminars, activity work, presentations and co-curricular activities. English/ Urdu and Arabic shall be the medium of instruction.
7. The students with less than 75% attendance in an academic year should freeze his/ her academic year that can then be looked into by a committee to decide.

8. Students must come to school in neatly laundered uniform and polished shoes. The hair should be trimmed and the nails must be cut regularly. Any student violating the norms of neatness may be sent back home and not be allowed to attend the school.
9. Cellphones are not allowed to the students anywhere in the premises.
10. Respect for school belongings and property be maintained by the students.
11. Use of inappropriate language and immoral act will seriously be considered by the disciplinary committee of the school.
12. Students are not allowed to take private tuitions from the teachers of the school.
13. Dishonesty of any type whether in examinations, assessments or otherwise will not be allowed.
14. Decency in behavior is expected from all the students. An indecent act will cause initiation of disciplinary probe.
15. All the students should deposit their dues on or before 10th of every month. Delays in fee submissions will not be entertained.
16. The students are not allowed to bring precious items/ belongings to the premises of the school.
17. The parents will have to sign an undertaking with the school to strictly abide with the rules and regulations of the school and will appear in person if required by the school management.
18. The results issued at the end of terms including terms will only be reconsidered for error/ omissions. Unnecessary interventions will not be entertained.
19. The parents/ guardians shall check the student diary on regular basis and the assignments and tasks done by their wards.
20. Half days and short leaves for the students will not be entertained.
21. Scholarship will not be claimed as a matter of right.
22. Any complaint against the respected teacher/ staff may only be made to the office of principal, after which the decision made by the principal will be final.
23. The list of students for the examination taken by the board(s) will be considered final. The students who are detained after the internal examination will not be allowed to appear in such examinations.

IMPORTANT CONTACT NUMBERS

<i>Sno</i>	<i>Name & Designation of the Contact</i>	<i>Contact Number</i>
1.	Principal, Pak Islamic Science Education System (PISES)	0995 - 622877
2.	Admin Officer, Pak Islamic Science Education System (PISES)	0316 – 5731089
3.	Director Operations, PSRA KPK	091-9216194
4.	B.I.S.E. Abbottabad	0992- 392010
5.	Coordinator Montessori and Nursery, PISES	0316 – 5731089
6.	Transport Guide, PISES (Not the part of PISES)	0324-8478856
7.	Emergency Number (PISES)	0316 – 5731089
8.	Search For a Telephone number	1217
9.	Canteen PISES	0312-2253521
10.	Watchman, PISES	0312-5285215